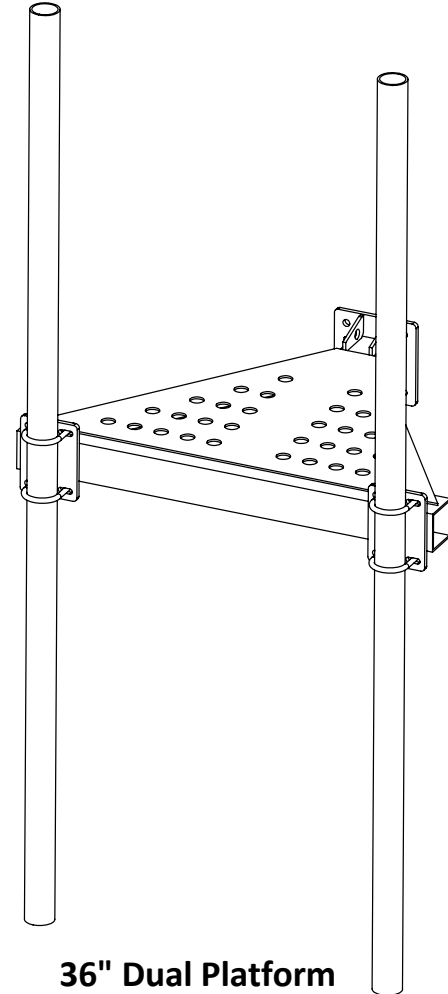


36" Dual T-Arm Platform Product Manual



36" Dual Platform

ARE Telecom & Broadband

1041 Grand Ave #213

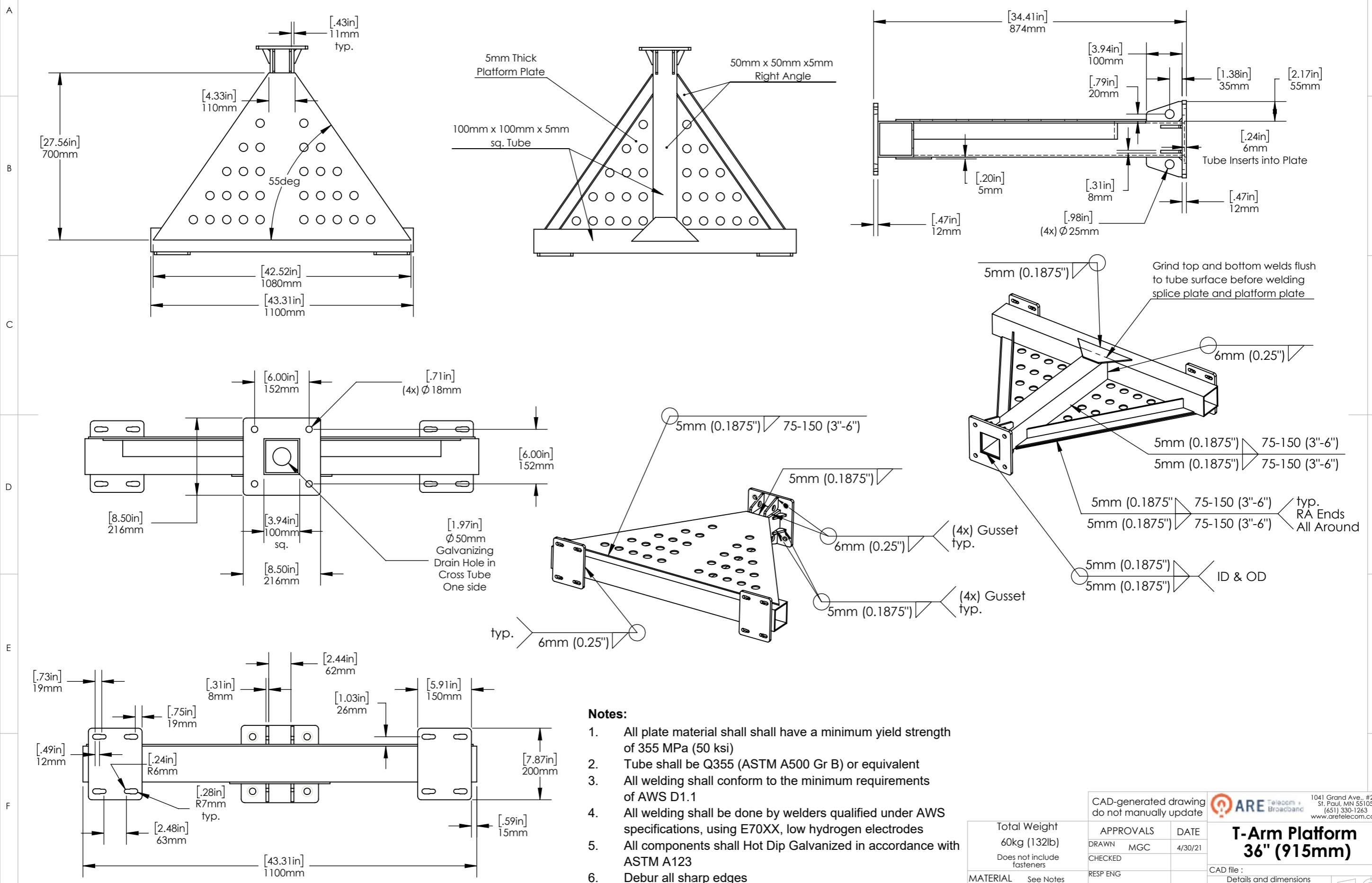
St. Paul, MN 55105

(651) 330-1263

www.aretelecom.com

Proprietary rights are included in the information disclosed herein. This information is submitted in confidence and neither the document nor the information disclosed here in shall be reproduced or transferred to other documents for manufacturing or for any other purpose except as specifically authorized in writing by ARE Telecom, Broadband & Wind.

REVISIONS			
REV.	DESCRIPTION	DATE	APPROVED
A	initial release	4/30/21	MGC
B			
C			



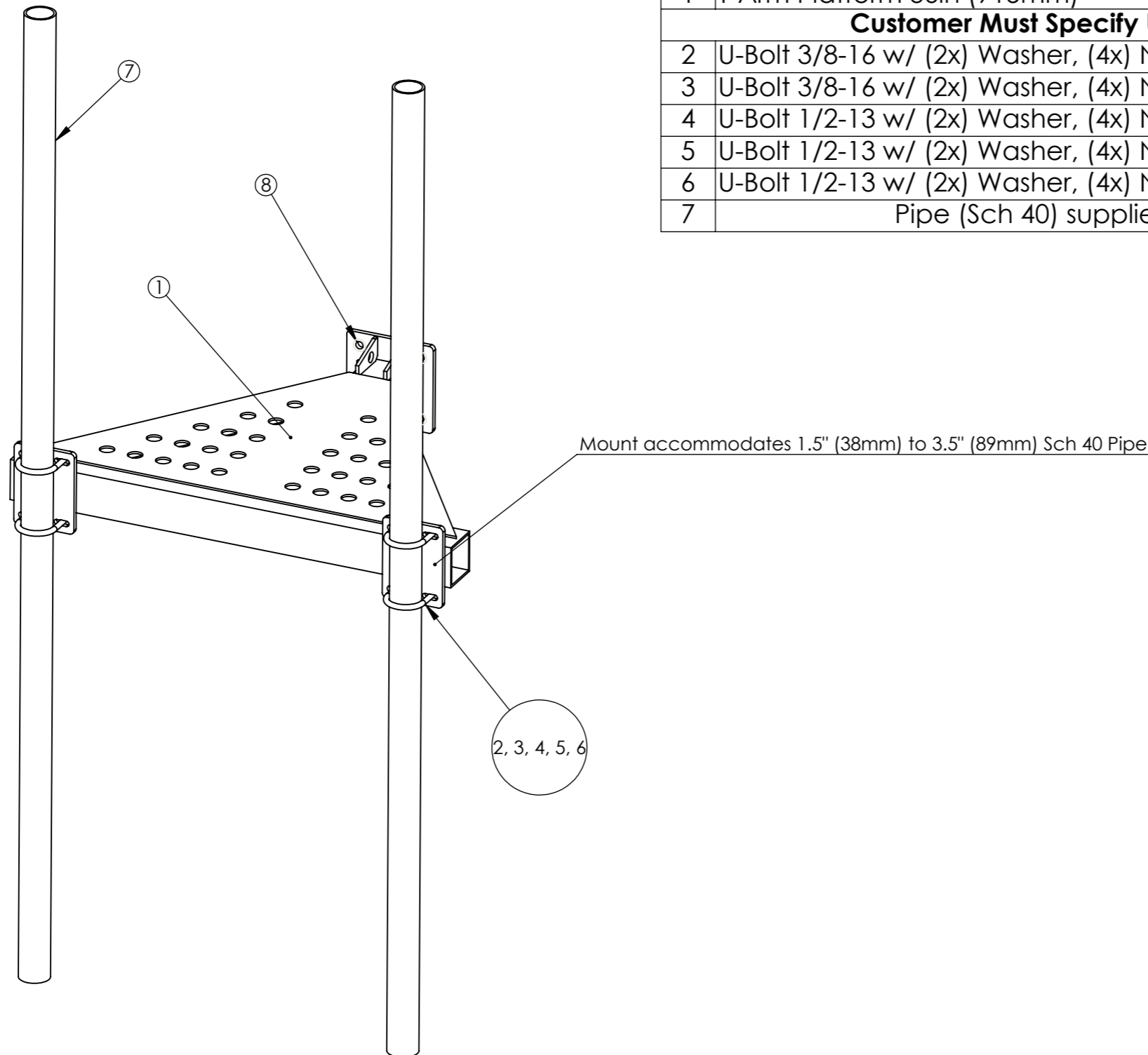
- Notes:**
- All plate material shall have a minimum yield strength of 355 MPa (50 ksi)
 - Tube shall be Q355 (ASTM A500 Gr B) or equivalent
 - All welding shall conform to the minimum requirements of AWS D1.1
 - All welding shall be done by welders qualified under AWS specifications, using E70XX, low hydrogen electrodes
 - All components shall Hot Dip Galvanized in accordance with ASTM A123
 - Debur all sharp edges

CAD-generated drawing do not manually update				1041 Grand Ave., #213 St. Paul, MN 55105 (651) 330-1263 www.aretelcom.com		
Total Weight	60kg (132lb)	APPROVALS	DATE	T-Arm Platform 36" (915mm) CAD file : Details and dimensions not shown on this drawing can be found in CAD file.		
Does not include fasteners		DRAWN	MGC			4/30/21
		CHECKED				
MATERIAL	See Notes	RESP ENG				
FINISH	See Notes	MFG ENG				
DO NOT SCALE DRAWING		QUAL ENG		scale NA rev. A size NA sheet 1 of 3		

Proprietary rights are included in the information disclosed herein. This information is submitted in confidence and neither the document nor the information disclosed here in shall be reproduced or transferred to other documents for manufacturing or for any other purpose except as specifically authorized in writing by ARE Telecom, Broadband & Wind.


36" (915mm) T-Arm Platform Bill of Materials

#	Description	Qty	Weight ea. kg/ (lb)
1	T-Arm Platform 36in (915mm)	1	60/ 132
Customer Must Specify U-Bolt (1.5" to 3.5" Schedule 40 Pipe)			
2	U-Bolt 3/8-16 w/ (2x) Washer, (4x) Nut - HDG (1.5" sch. 40 Pipe)	4	
3	U-Bolt 3/8-16 w/ (2x) Washer, (4x) Nut - HDG (2" sch. 40 Pipe)	4	
4	U-Bolt 1/2-13 w/ (2x) Washer, (4x) Nut - HDG (2.5" sch. 40 Pipe)	4	
5	U-Bolt 1/2-13 w/ (2x) Washer, (4x) Nut - HDG (3" sch. 40 Pipe)	4	
6	U-Bolt 1/2-13 w/ (2x) Washer, (4x) Nut - HDG (3.5" sch. 40 Pipe)	4	
7	Pipe (Sch 40) supplied by customer		



T-Arm Mounting Bolts, Nuts & Washers (other equivalent grades acceptable)

#	Unit	Bolt Size	Length	Width Across Flats	Thread Length	Grade	Coating	Nut Qty.	Washer Qty.	Bolt Qty.
8	Metric	M16x2	65mm	24mm	Full Thread	8.8	Hot Dip Galv.	8	8	4
8	Imperial	5/8-11	2-1/2"	15/16"	Full Thread	A325	Hot Dip Galv.	8	8	4


 1041 Grand Ave., #213
 St. Paul, MN 55105
 (651) 330-1263
 www.aretelcom.com

T-Arm Platform
36" (915mm) BOM

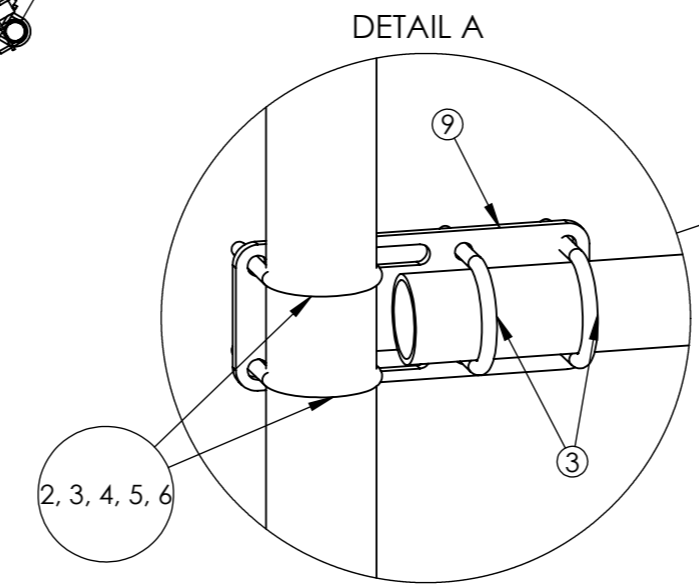
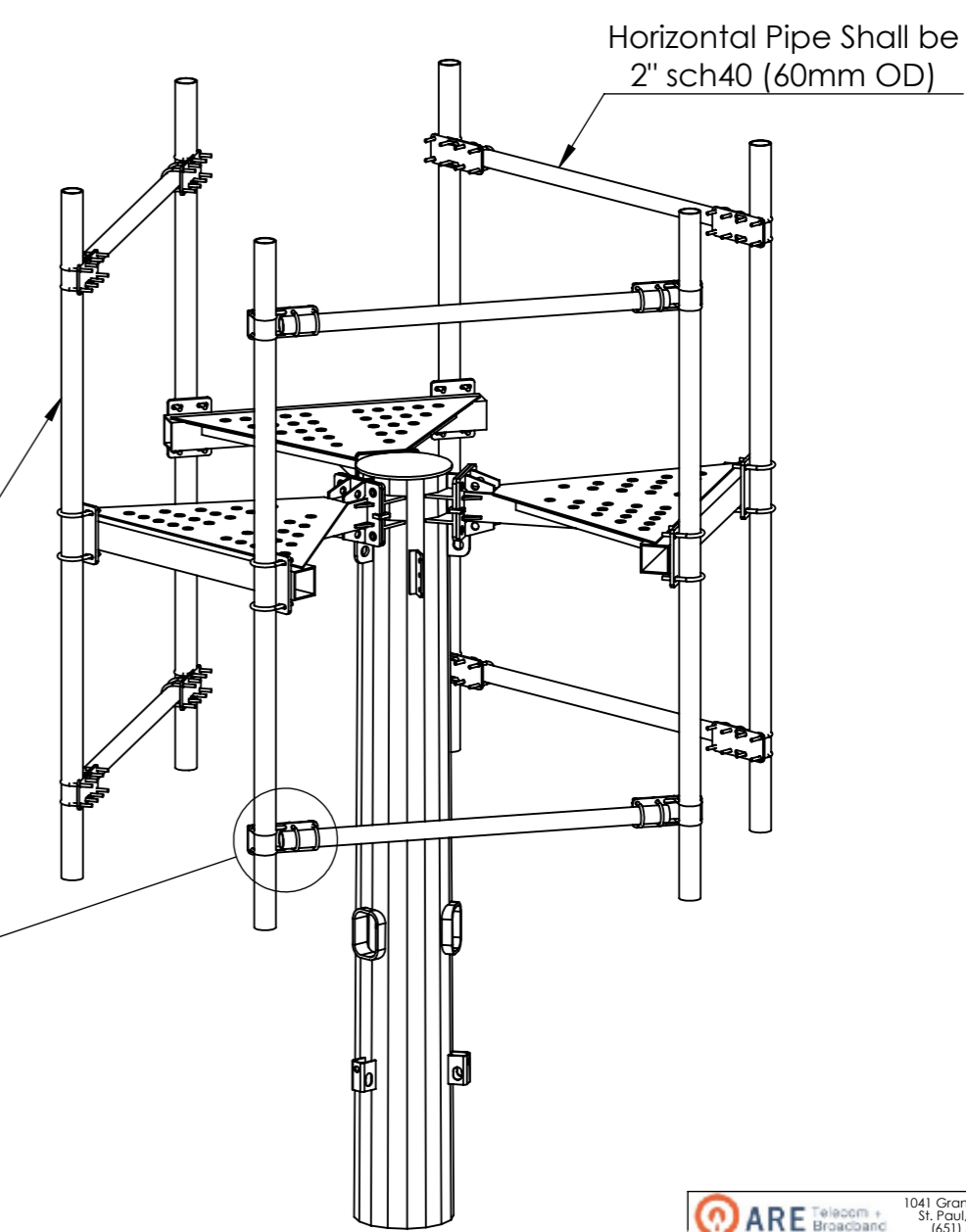
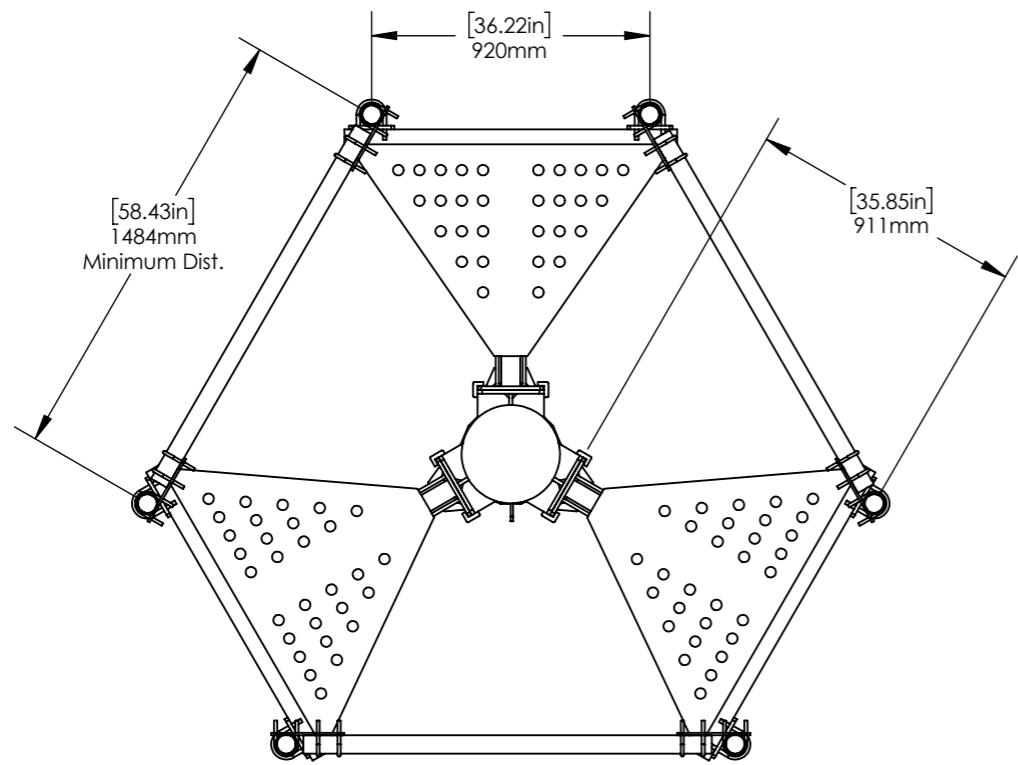
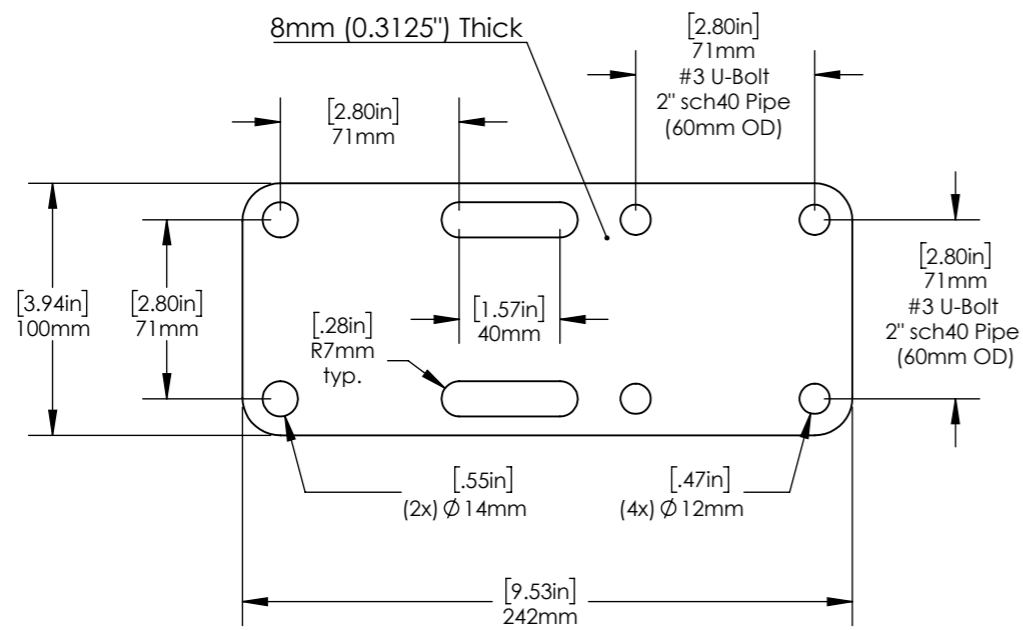
Part #

scale NA rev. A size NA sheet 2 of 3

Proprietary rights are included in the information disclosed herein. This information is submitted in confidence and neither the document nor the information disclosed here in shall be reproduced or transferred to other documents for manufacturing or for any other purpose except as specifically authorized in writing by ARE Telecom, Broadband & Wind.

Horizontal Pipe Mounting Plate Bill of Materials

#	Description	Qty	Weight ea. kg/ (lb)
9	Horizontal Pipe Mounting Plate	1	1.4/ 3.1
Customer Must Specify U-Bolt (1.5" to 3.5" Schedule 40 Pipe)			
2	U-Bolt 3/8-16 w/ (2x) Washer, (4x) Nut - HDG (1.5" sch. 40 Pipe)	4	
3	U-Bolt 3/8-16 w/ (2x) Washer, (4x) Nut - HDG (2" sch. 40 Pipe)	4	
4	U-Bolt 1/2-13 w/ (2x) Washer, (4x) Nut - HDG (2.5" sch. 40 Pipe)	4	
5	U-Bolt 1/2-13 w/ (2x) Washer, (4x) Nut - HDG (3" sch. 40 Pipe)	4	
6	U-Bolt 1/2-13 w/ (2x) Washer, (4x) Nut - HDG (3.5" sch. 40 Pipe)	4	
7	Pipe (Sch 40) supplied by customer		



Notes:

- All plate material shall have a minimum yield strength of 355 MPa (50 ksi)
- All components shall Hot Dip Galvanized in accordance with ASTM A123
- Debur all sharp edges

4) ANALYSIS RESULTS

Table 2 – Mount Classifications - Max Appurtenance Load

Mount Model	Mount Classification	Max Normal Horizontal Load (lbs)	Max Transverse Horizontal Load (lbs)	Max Vertical Load w/ Ice (lbs)
T-Arm Platform 36" (915 mm)	M2500R(2400)-2[6]	2500	2500	2400

Note: The max normal and transverse loads are representative of an extreme wind condition. The max vertical load with ice is representative of an extreme ice condition. The maximum loads listed are factored loads applied at (1) mast pipe location per sector in accordance with TIA-5053

Table 3 – Mount Classifications – Max Appurtenance EPA

Mount Model	Max EPA (sqft)				
	180 mph Ult Wind Speed	150 mph Ult Wind Speed	130 mph Ult Wind Speed	110 mph Ult Wind Speed	90 mph Ult Wind Speed
T-Arm Platform 36" (915 mm)	18.72	26.96	35.89	50.13	74.89

Note: The max appurtenance EPA following analysis criteria in Section 2 of this report with varying ultimate wind speeds assuming a Force Coefficient (Ca) of 2.0.

Table 4 – Mount Effective Projected Areas

Mount Model	Mount EPA _N w/ No Ice (ft ²)	Mount EPA _T w/ No Ice (ft ²)	Mount EPA _N w/ ½" Ice (ft ²)	Mount EPA _T w/ ½" Ice (ft ²)	Mount EPA _N w/ 1" Ice (ft ²)	Mount EPA _T w/ 1" Ice (ft ²)
T-Arm Platform 36" (915 mm)	26.90	26.07	34.50	33.32	43.48	41.95

* (2) 4.0" diameter x 96" long mount pipe per sector

Table 5 – Mount Weights

Mount Model	Weight w/ No Ice (lbs)	Weight w/ ½" Ice (lbs)	Weight w/ 1" Ice (lbs)
T-Arm Platform 36" (915 mm)	951.7	1292.8	1643.0

* (2) 4.0" diameter x 96" long mount pipe per sector