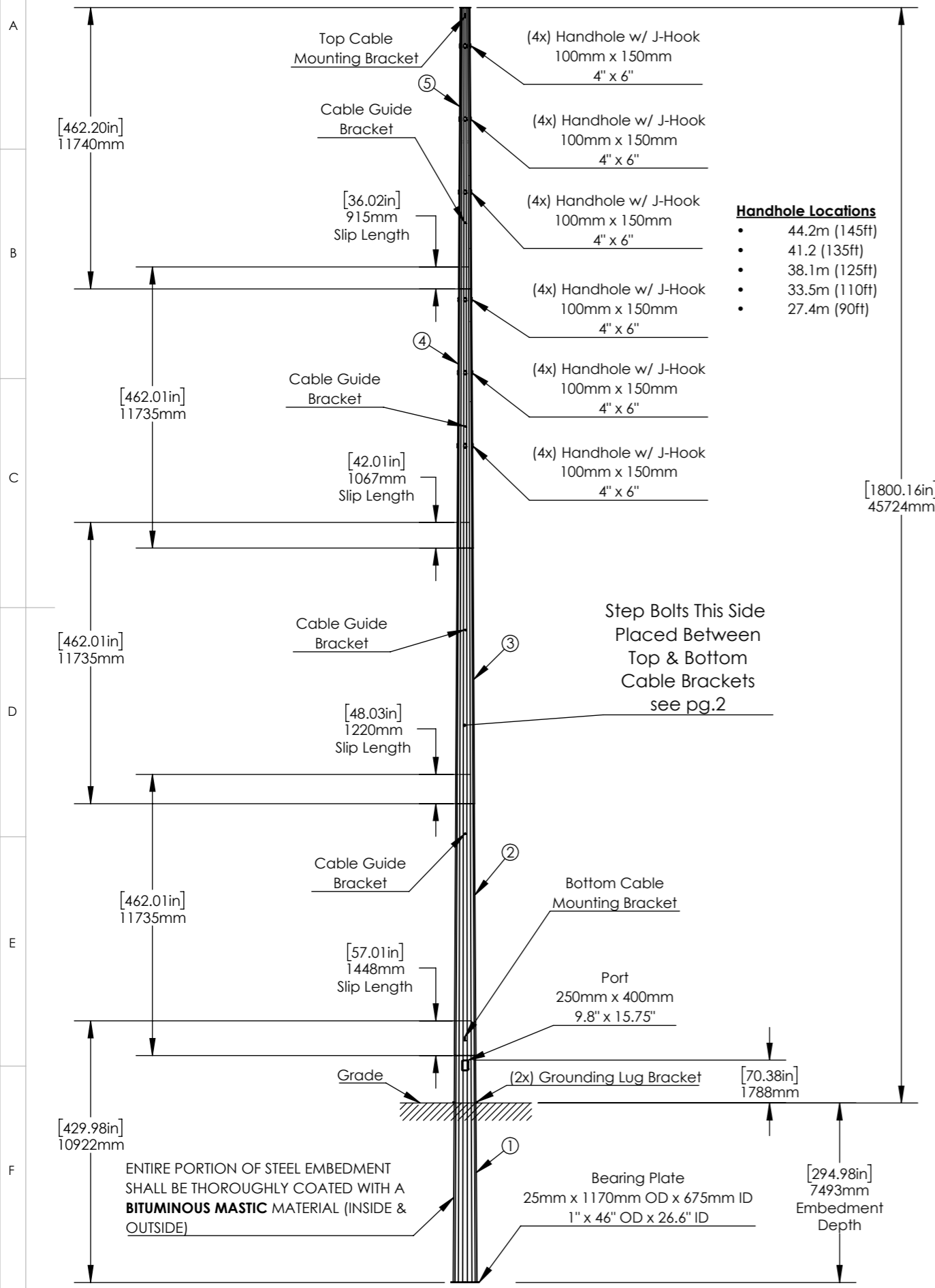


Proprietary rights are included in the information disclosed herein. This information is submitted in confidence and neither the document nor the information disclosed herein shall be reproduced or transferred to other documents for manufacturing or for any other purpose except as specifically authorized in writing by ARE Telecom & Wind.

REVISIONS			
REV.	DESCRIPTION	DATE	APPROVED
A	initial release	4/12/21	MGC
B			



Handhole Locations

- 44.2m (145ft)
- 41.2 (135ft)
- 38.1m (125ft)
- 33.5m (110ft)
- 27.4m (90ft)

- Survival Wind Speed: Per Local Code
 - Structure Class - Per Local Code
 - Topographic - Per Local Code
 - Exposure - Per Local Code
- Design and Welding Codes:
 - TIA-222-G
 - AWS D1.1
- Material (or equivalent)
 - Pole: Q355 (ASTM A572 GR50)
 - Bearing Plate: Q355 (ASTM A572 GR50)
 - Splice Plates/ Flanges: Q355 (ASTM A572 GR50)

- Finish: Hot dip Galvanizing per ASTM A123
- Pole has 16 sides
- Pole Section Details

Pole Section	#1	#2	#3	#4	#5
Thickness - (in)/ (mm)	0.3937/ 10	0.3937/ 10	0.315/ 8	0.236/ 6	0.197/5
Length - (ft)/ (m)	35.8/ 10.92	35.8/ 11.74	35.8/ 11.74	35.8/ 11.74	35.8/ 11.74
Top Dia. - (in)/ (mm)	34.4/ 864	29.8/ 758	25.4/ 646	20.75/ 527	16/ 405
Bottom Dia. - (in)/ (mm)	39.25/ 997	35.5/ 901	31.1/ 789	26.4/ 671	21.57/ 548
Min Slip - (in)/ (mm)		57/ 1448	48/ 1220	42/ 1067	36/ 915
Weight (lbs)/ (kg)	5874/ 2670	5324/ 2420	3683/ 1674	2334/ 1061	1575/ 716

CAD-generated drawing do not manually update

ARE Telecom 1041 Grand Ave., #213 St. Paul, MN 55105 (651) 330-1263 www.aretelcom.com

Total Weight 18788 lbs (8540 kg) Does not include fasteners	APPROVALS DRAWN MGC CHECKED RESP ENG MFG ENG QUAL ENG	DATE 4/12/21
---	--	-----------------

45.7m 150ft DBSJ55 Pole

CAD file : Details and dimensions not shown on this drawing can be found in CAD file.

scale NA rev. A size NA sheet 1 of 3

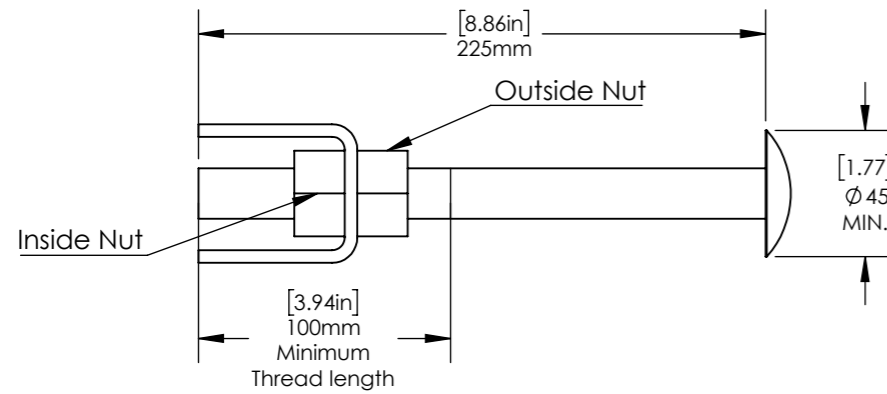
DO NOT SCALE DRAWING

Proprietary rights are included in the information disclosed herein. This information is submitted in confidence and neither the document nor the information disclosed here in shall be reproduced or transferred to other documents for manufacturing or for any other purpose except as specifically authorized in writing by ARE Telecom, Broadband & Wind.

#	DESCRIPTION (Optional Grade)	QTY	Weight (lb/ kg)
1	Clip - ASTM A572 GR 50 (Q345 or Q355)	*1	1.2/ 0.54
2	Step Bolt - M20x2.5 x 225mm - A449 (GR 8.8) HDG	*1	0.88/ 0.64
3	Heavy Hex Nut, M20x2.5 - A563 GR DH (GR 8.8) HDG	*2	0.224/ 0.11

REVISIONS			
REV.	DESCRIPTION	DATE	APPROVED
A	initial release	10/12/20	MGC
B	Revised BOM bolt length to 225mm	11/2/20	MGC

CLIP-STEP BOLT

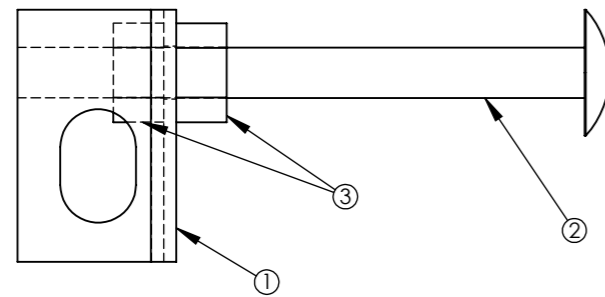


Fabrication Notes:

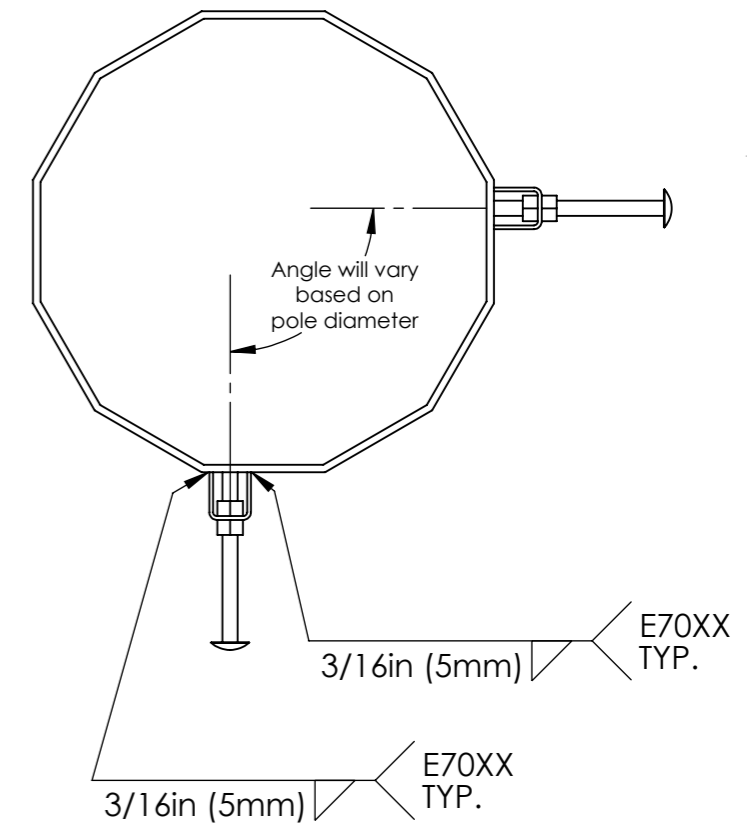
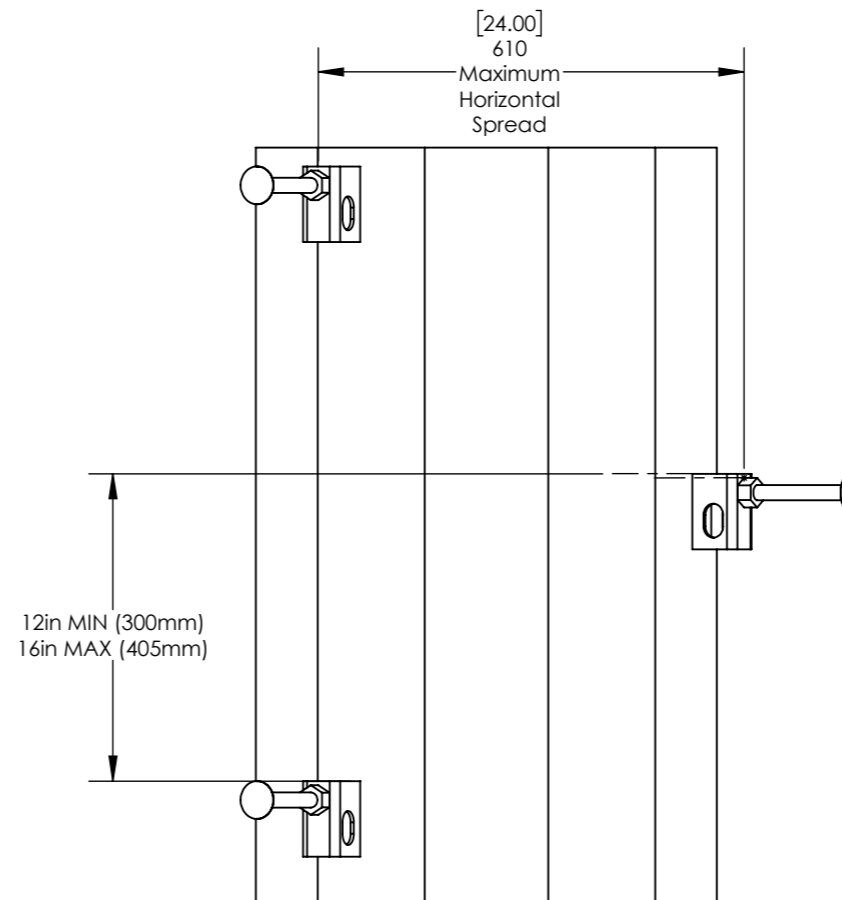
- *The number of Clips/ Step Bolts will vary based on height of pole and shall be equally spaced between the upper and lower cable mount brackets (see pg. 2).
- All plate material shall have a minimum yield strength of 345 MPa (50 ksi)
- All welding shall conform to the minimum requirements of AWS D1.1
- All welding shall be done by welders qualified under AWS specifications, using E70XX, low hydrogen electrodes
- Hot Dip Galvanized in accordance with ASTM A123
- Debur all sharp edges

Installation Steps:

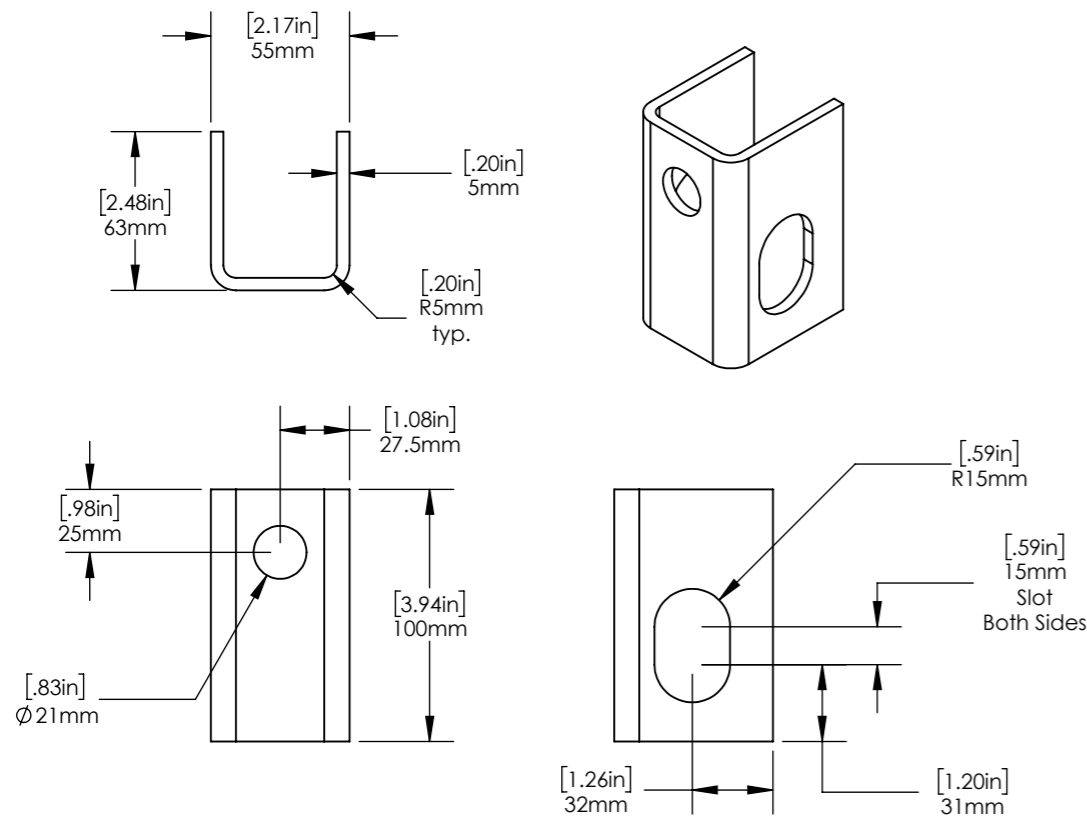
- Outside nut shall be turned to end of step bolt threads prior to installation.
- Step bolt shall be turned through inside nut until bolt makes snug contact with pole.
- Outside nut shall be snugged against clip then tightened 1/4 to 1/2 turn to achieve proper step bolt preload.



CLIP-STEP BOLT SPACING



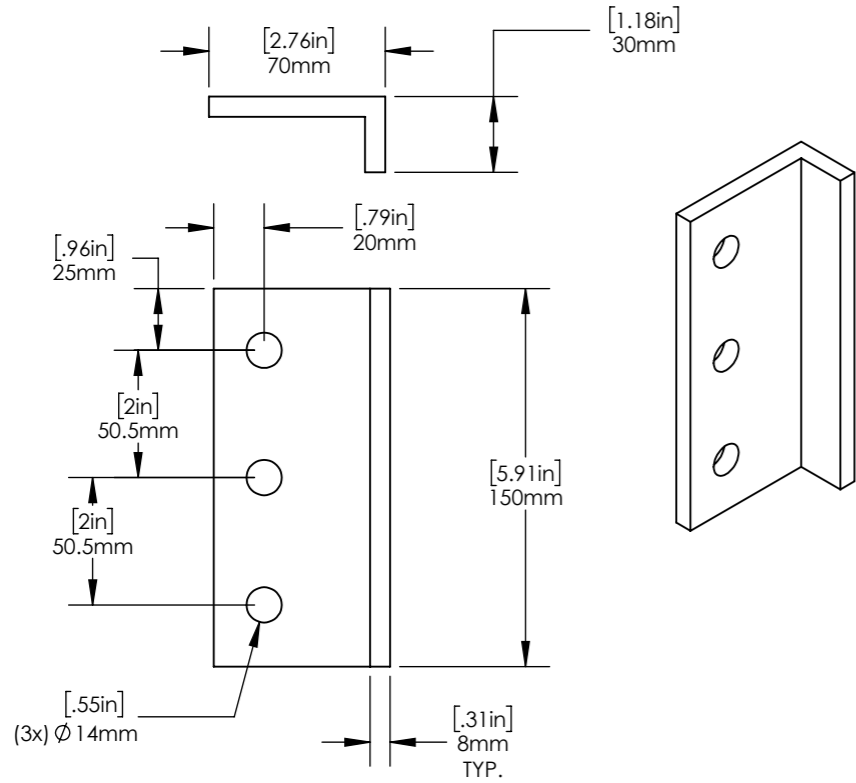
CLIP



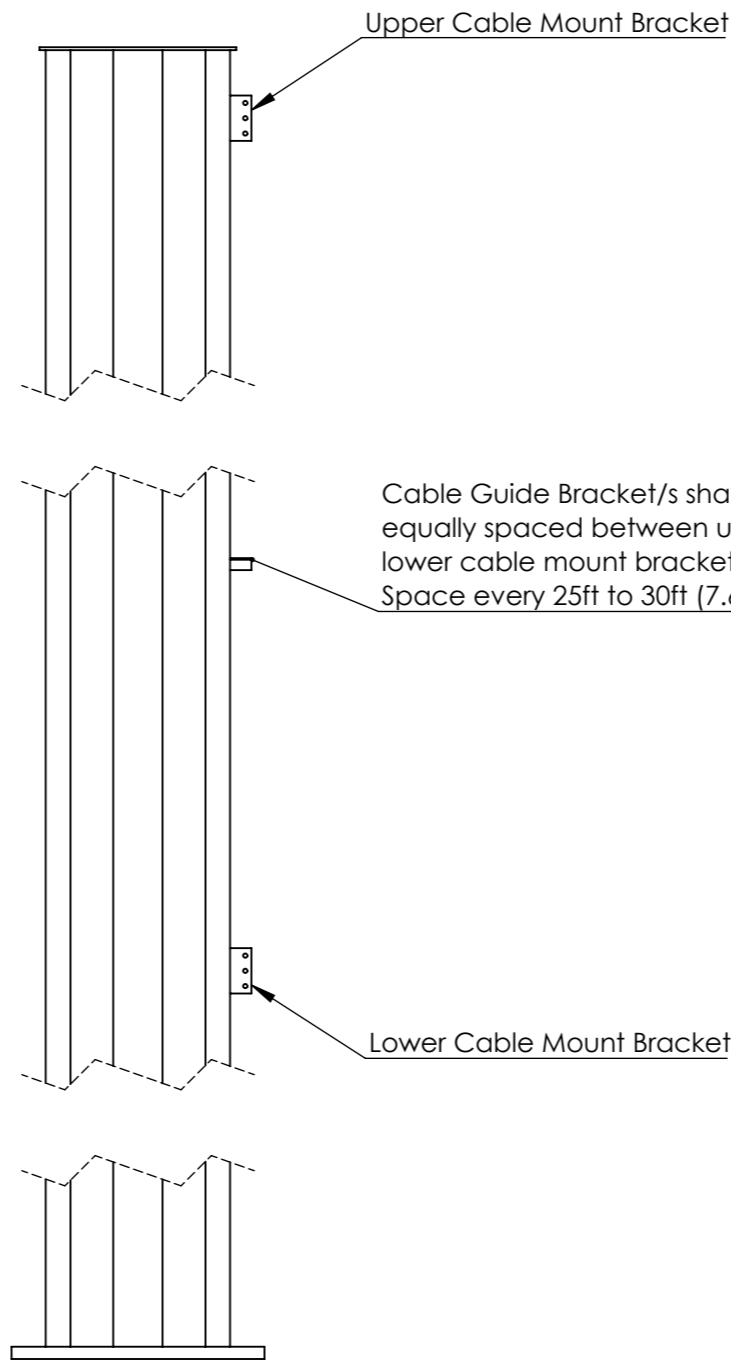
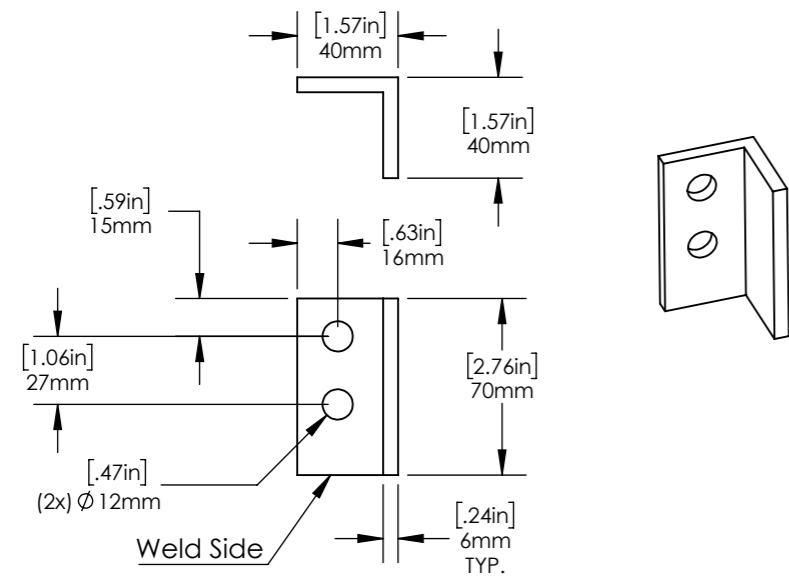
CAD-generated drawing do not manually update				1041 Grand Ave., #213 St. Paul, MN 55105 (651) 330-1263 www.aretelcom.com	
Total Weight 3.1 lbs (1.41 kg)		APPROVALS DRAWN MGC CHECKED RESP ENG MFG ENG QUAL ENG		DATE 10/12/20	
MATERIAL See Notes		FINISH See Notes		Step Bolt/ Clip CAD file : Details and dimensions not shown on this drawing can be found in CAD file.	
DO NOT SCALE DRAWING		scale NA rev. B size NA		sheet 2 of 3	

Proprietary rights are included in the information disclosed herein. This information is submitted in confidence and neither the document nor the information disclosed here in shall be reproduced or transferred to other documents for manufacturing or for any other purpose except as specifically authorized in writing by ARE Telecom, Broadband & Wind.

Cable Mount Bracket



Cable Guide Bracket



Align mounting holes with center line of pole

Fabrication Notes:

- *The number of cable guides will vary based on height of pole and shall be equally spaced between the upper and lower cable mount brackets.
- All plate material shall have a minimum yield strength of 345 MPa (50 ksi)
- All welding shall conform to the minimum requirements of AWS D1.1
- All welding shall be done by welders qualified under AWS specifications, using E70XX, low hydrogen electrodes
- Hot Dip Galvanized in accordance with ASTM A123
- Debur all sharp edges

#	DESCRIPTION (Optional Grade)	QTY	Weight lb/ kg
1	Cable Mount Bracket-ASTM A572 GR 50 (Q345 or Q355)	2	1.85/ 0.84
2	Cable Guide Bracket-ASTM A572 GR 50 (Q345 or Q355)	*1 or more	0.51/ 0.23

1041 Grand Ave., #213
St. Paul, MN 55105
(651) 330-1263
www.aretelcom.com

Cable Mount/ Guide Brackets

Part #
scale NA rev. B size NA sheet 3 of 3