



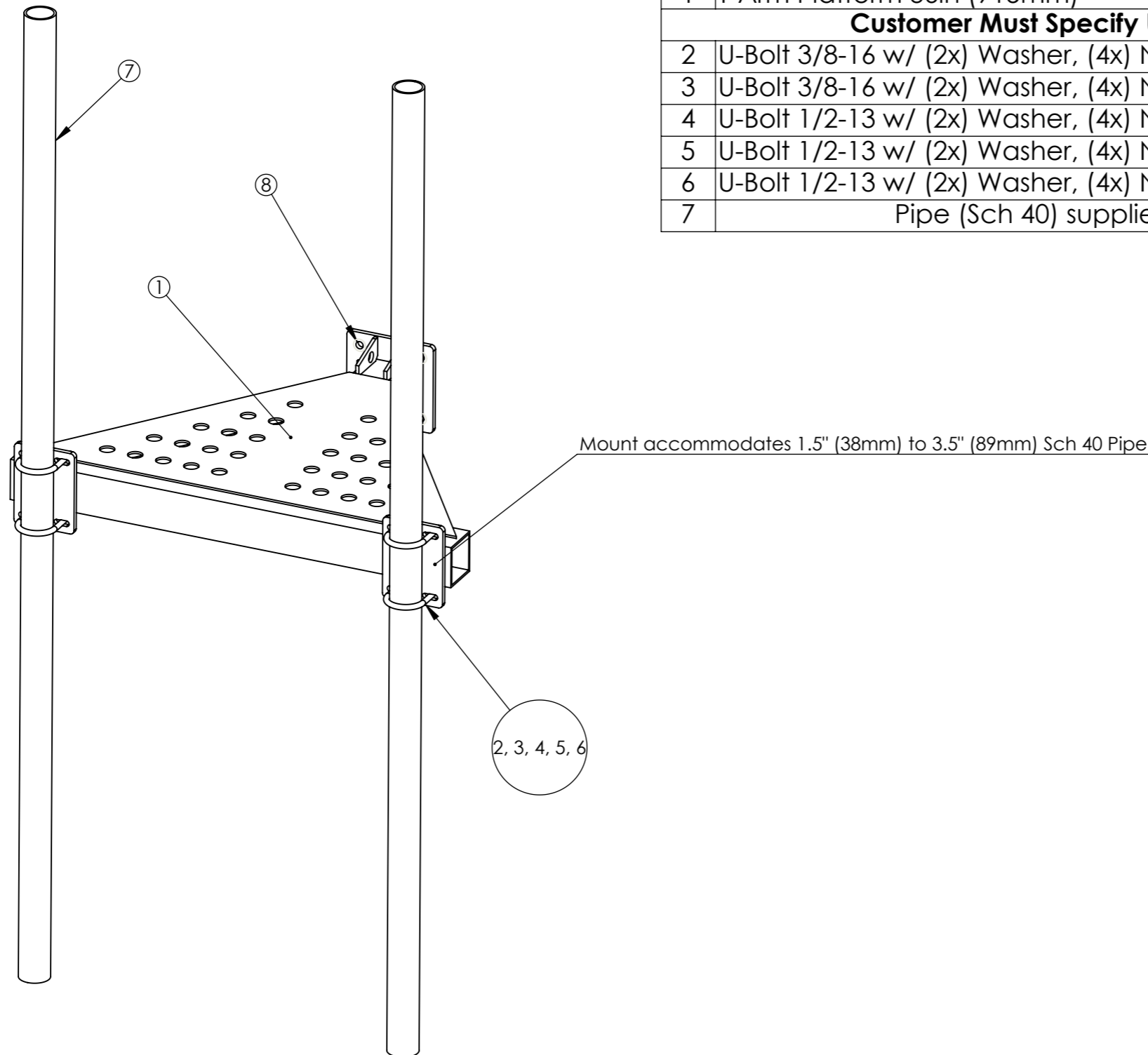




Proprietary rights are included in the information disclosed herein. This information is submitted in confidence and neither the document nor the information disclosed here in shall be reproduced or transferred to other documents for manufacturing or for any other purpose except as specifically authorized in writing by ARE Telecom, Broadband & Wind.


### 36" (915mm) T-Arm Platform Bill of Materials

#	Description	Qty	Weight ea. kg/ (lb)
1	T-Arm Platform 36in (915mm)	1	60/ 132
<b>Customer Must Specify U-Bolt (1.5" to 3.5" Schedule 40 Pipe)</b>			
2	U-Bolt 3/8-16 w/ (2x) Washer, (4x) Nut - HDG (1.5" sch. 40 Pipe)	4	
3	U-Bolt 3/8-16 w/ (2x) Washer, (4x) Nut - HDG (2" sch. 40 Pipe)	4	
4	U-Bolt 1/2-13 w/ (2x) Washer, (4x) Nut - HDG (2.5" sch. 40 Pipe)	4	
5	U-Bolt 1/2-13 w/ (2x) Washer, (4x) Nut - HDG (3" sch. 40 Pipe)	4	
6	U-Bolt 1/2-13 w/ (2x) Washer, (4x) Nut - HDG (3.5" sch. 40 Pipe)	4	
7	Pipe (Sch 40) supplied by customer	2	



#### T-Arm Mounting Bolts, Nuts & Washers (other equivalent grades acceptable)

#	Unit	Bolt Size	Length	Width Across Flats	Thread Length	Grade	Coating	Nut Qty.	Washer Qty.	Bolt Qty.
8	Metric	M16x2	65mm	24mm	Full Thread	8.8	Hot Dip Galv.	8	8	4
8	Imperial	5/8-11	2-1/2"	15/16"	Full Thread	A325	Hot Dip Galv.	8	8	4


 1041 Grand Ave., #213  
 St. Paul, MN 55105  
 (651) 330-1263  
 www.aretelcom.com

**T-Arm Platform**  
**36" (915mm) BOM**

Part #  

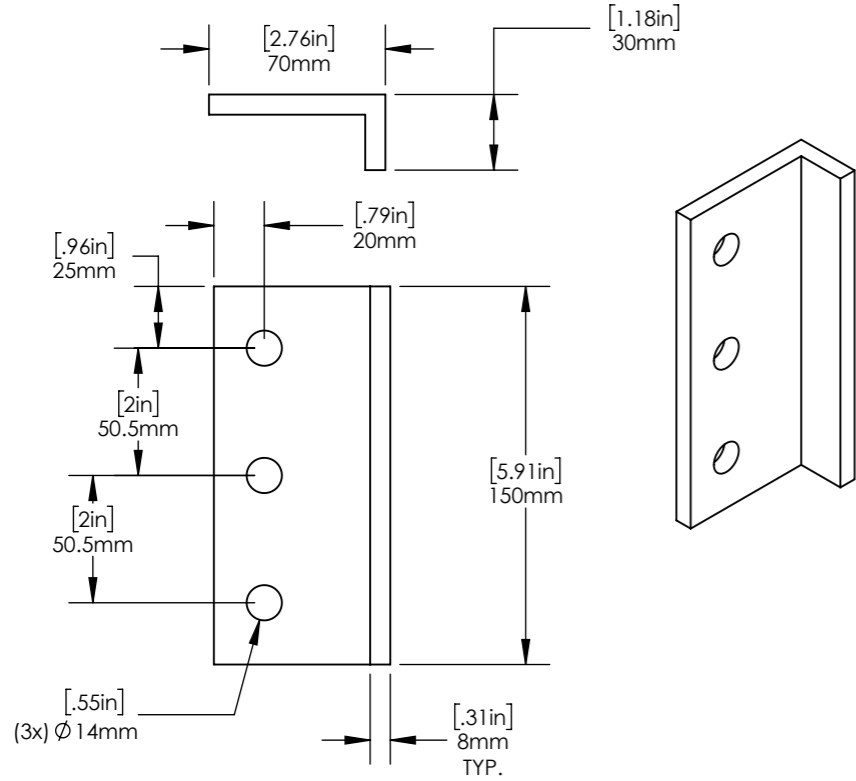
scale NA rev. A size NA sheet 4 of 7



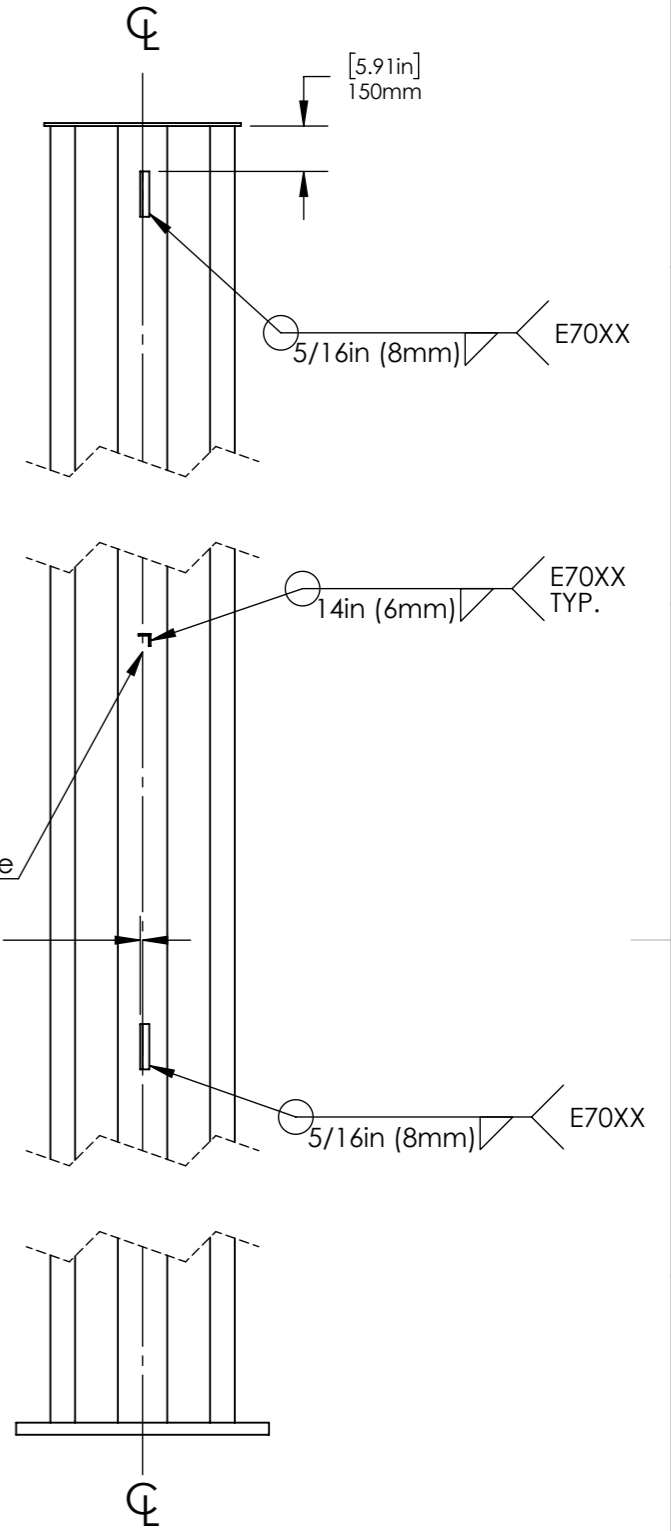
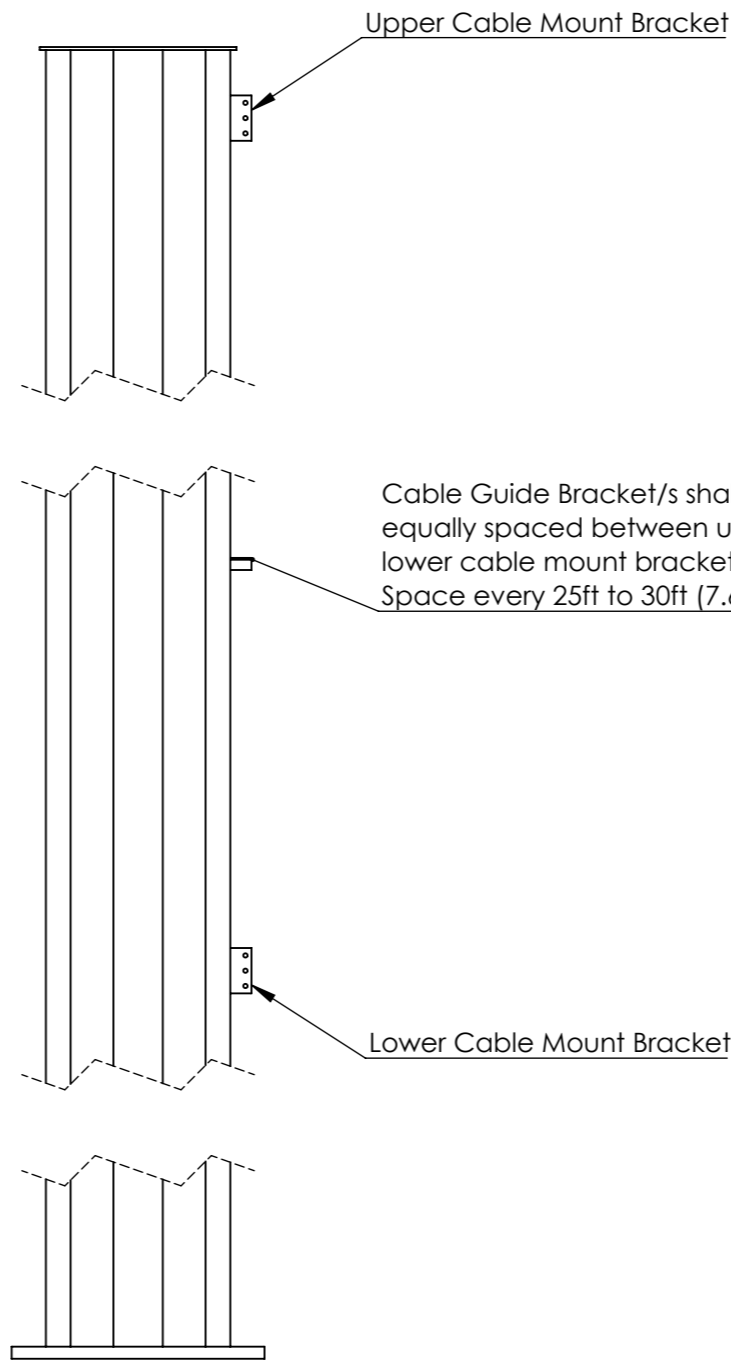
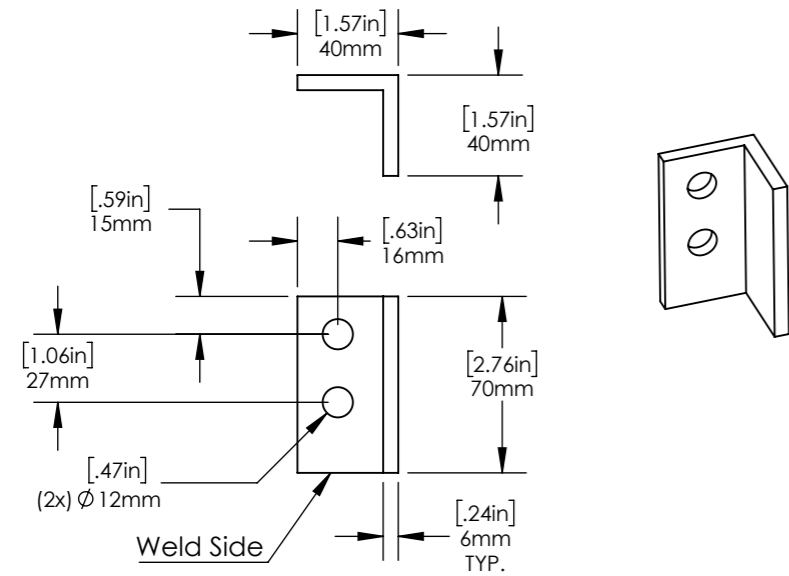


Proprietary rights are included in the information disclosed herein. This information is submitted in confidence and neither the document nor the information disclosed here in shall be reproduced or transferred to other documents for manufacturing or for any other purpose except as specifically authorized in writing by ARE Telecom, Broadband & Wind.

### Cable Mount Bracket



### Cable Guide Bracket



#### Fabrication Notes:

- \*The number of cable guides will vary based on height of pole and shall be equally spaced between the upper and lower cable mount brackets.
- All plate material shall have a minimum yield strength of 345 MPa (50 ksi)
- All welding shall conform to the minimum requirements of AWS D1.1
- All welding shall be done by welders qualified under AWS specifications, using E70XX, low hydrogen electrodes
- Hot Dip Galvanized in accordance with ASTM A123
- Debur all sharp edges

#	DESCRIPTION (Optional Grade)	QTY	Weight lb/ kg
1	Cable Mount Bracket-ASTM A572 GR 50 (Q345 or Q355)	2	1.85/ 0.84
2	Cable Guide Bracket-ASTM A572 GR 50 (Q345 or Q355)	*1 or more	0.51/ 0.23

1041 Grand Ave., #213  
St. Paul, MN 55105  
(651) 330-1263  
www.aretelcom.com

**Cable Mount/ Guide Brackets**

Part #

scale NA rev. A size NA sheet 7 of 7